

LED Cylinder Collection

Energy-Efficient Cylinder Lighting
December 2015



The new CSL Cylinder collection offers the best in functional yet decorative lighting. These luminaires integrate a dimmable, energy-efficient LED light source into slim silhouettes providing a range of mounting options and endless style.

LED Adjustable Pendant	4
LED Flush Mount	10
LED Pendant	2
LED Wall Mount	6
LED Wall Mount Up & Down	8





LED Pendant

LED Pendant

Fixture

- Available in three sizes:
 LP2: 2¼" Ø x 6¾" h
 LP3: 3½" Ø x 10¾" h
 LP5: 5" Ø x 11½" h
- 120-277V LED:
 LP2 – 14W –
 2,700°k ±50k, CRI 90, 980lm
 3,000°k ±50k, CRI 90, 1074lm
 3,500°k ±50k, CRI 90, 1157lm
 4,000°k ±50k, CRI 80, 1250lm
 LP3 – 24W –
 2,700°k ±50k, CRI 90, 1900lm
 3,000°k ±50k, CRI 90, 2035lm
 3,500°k ±50k, CRI 90, 2186lm
 4,000°k ±50k, CRI 80, 2691lm
 LP5 – 38W –
 2,700°k ±50k, CRI 90, 2815lm
 3,000°k ±50k, CRI 90, 3012lm
 3,500°k ±50k, CRI 90, 3012lm
 4,000°k ±50k, CRI 80, 3700lm
- INC/ELV/0-10V Universal dimming. Lutron dimming options and EldoLED dimming options available. See order example on pg 13.
- Canopy mount
- 30°, 50° and 80° optics included; optional optic: Very Narrow 10°
- UL/C-UL listed for wet location
- Includes 4 stems with hang-straight canopy: 1-6", 2-12" and 1-18"

Housing

- Machined aluminum housing

Finish

- See finishes on page 12.



LP2-30-PNA-3



LP5-27-TBZ-1



LP3-40-WT-4



Adjustable LED Pendant

Adjustable LED Pendant

Fixture

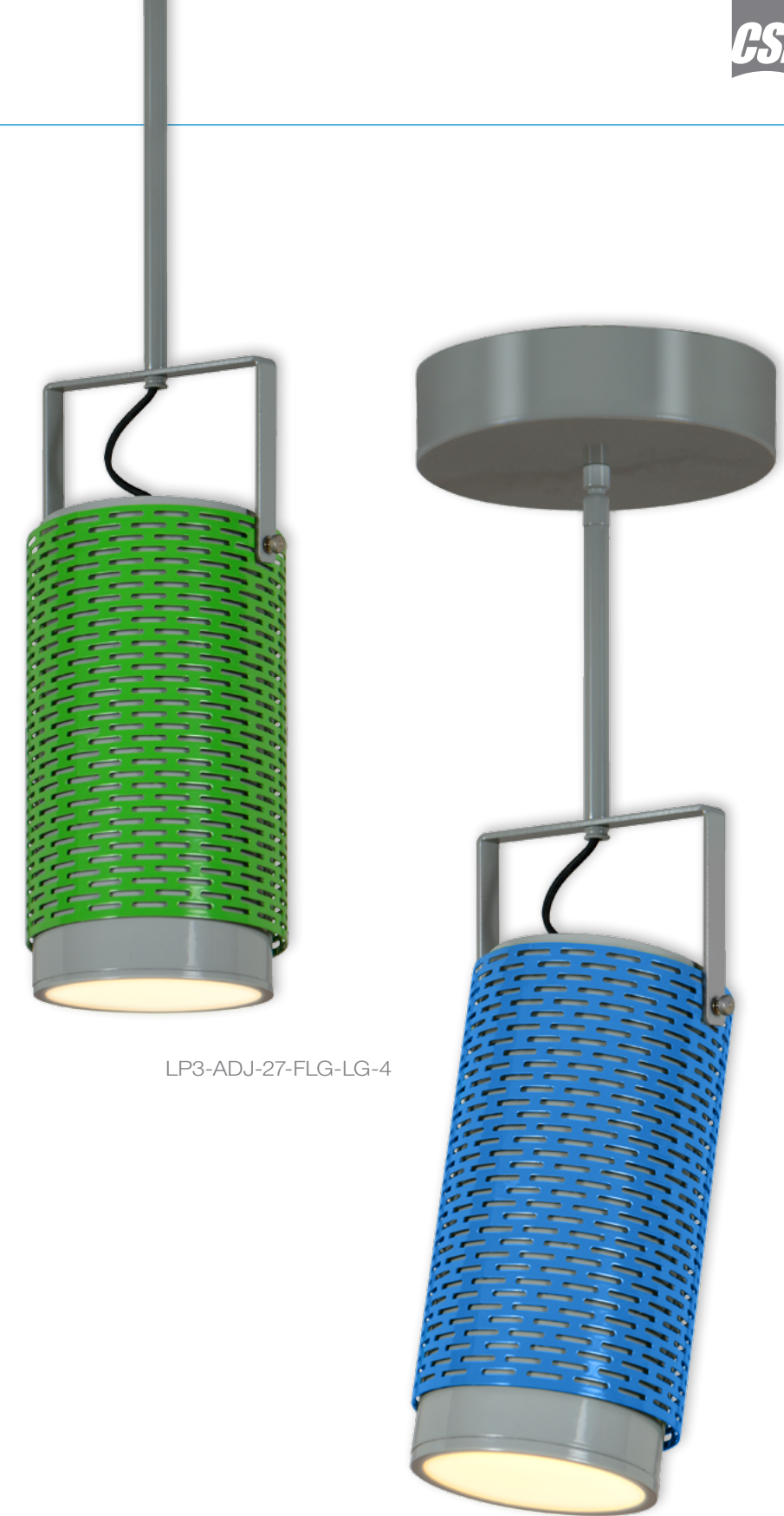
- Available in three sizes:
LP2-ADJ – 2¼" Ø x 9¼" h
LP3-ADJ – 3½" Ø x 13¾" h
LP5-ADJ – 5" Ø x 14¾" h
- Adjustable to 90° horizontally
- 120-277V LED:
 - LP2-ADJ – 14W –
2,700°k ±50k, CRI 90, 980lm
3,000°k ±50k, CRI 90, 1074lm
3,500°k ±50k, CRI 90, 1157lm
4,000°k ±50k, CRI 80, 1250lm
 - LP3-ADJ – 24W –
2,700°k ±50k, CRI 90, 1900lm
3,000°k ±50k, CRI 90, 2035lm
3,500°k ±50k, CRI 90, 2186lm
4,000°k ±50k, CRI 80, 2691lm
 - LP5-ADJ – 38W –
2,700°k ±50k, CRI 90, 2815lm
3,000°k ±50k, CRI 90, 3012lm
3,500°k ±50k, CRI 90, 3012lm
4,000°k ±50k, CRI 80, 3700lm
- INC/ELV/0-10V Universal dimming. Lutron dimming options and EldoLED dimming options available. See order example on pg 13.
- Canopy mount
- 30°, 50° and 80° optics included; optional optic: Very Narrow 10°
- UL/C-UL listed for wet location

Housing

- Machined aluminum housing

Finish

- See finishes on page 12.



LP3-ADJ-27-FLG-LG-4

LP3-ADJ-27-FLG-BLU-4



LW5-30-TBZ-1



LW3-35-PNA-4

LED Wall Mount

Fixture

- Available in three sizes:
 - LW2 – 2¼" Ø x 6¾" h x 4" p ADA
 - LW3 – 3½" Ø x 10¾" h x 5¼" p
 - LW5 – 5" Ø x 11½" h x 6¾" p
- 120-277V LED:
 - LW2 – 14W –
 - 2,700°k ±50k, CRI 90, 980lm
 - 3,000°k ±50k, CRI 90, 1074lm
 - 3,500°k ±50k, CRI 90, 1157lm
 - 4,000°k ±50k, CRI 80, 1250lm
 - LW3 – 24W –
 - 2,700°k ±50k, CRI 90, 1900lm
 - 3,000°k ±50k, CRI 90, 2035lm
 - 3,500°k ±50k, CRI 90, 2186lm
 - 4,000°k ±50k, CRI 80, 2691lm
 - LW5 – 38W –
 - 2,700°k ±50k, CRI 90, 2815lm
 - 3,000°k ±50k, CRI 90, 3012lm
 - 3,500°k ±50k, CRI 90, 3012lm
 - 4,000°k ±50k, CRI 80, 3700lm
- INC/ELV/0-10V Universal dimming. Lutron dimming options and EldoLED dimming options available. See order example on pg 13.
- Wall mount
- 30°, 50° and 80° optics included; optional optic: Very Narrow 10°
- UL/C-UL listed for wet location

Housing

- Machined aluminum housing

Finish

- See finishes on page 12.



LED Wall Mount



LED Wall Mount Up & Down

LED Wall Mount Up & Down

Fixture

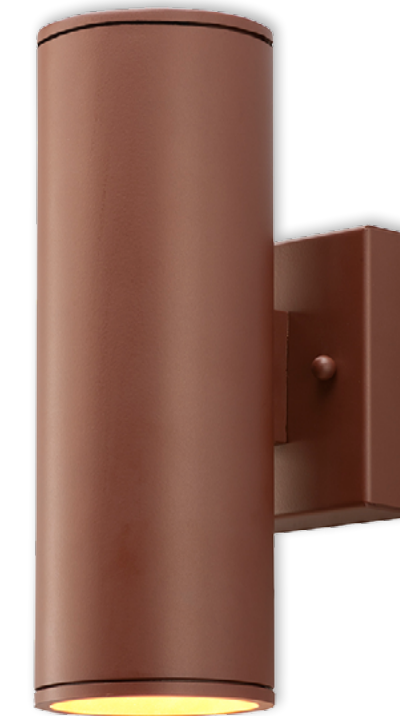
- Fixture illuminates from top and bottom of cylinder
- Available in three sizes:
LWD2 – 2¼" Ø x 6¾" h x 4" p ADA
LWD3 – 3½" Ø x 10¾" h x 5¼" p
LWD5 – 5" Ø x 11½" h x 6¾" p
- 120-277V LED:
 - LWD2 – 14W –
2,700°k ±50k, CRI 90, 980lm
3,000°k ±50k, CRI 90, 1074lm
3,500°k ±50k, CRI 90, 1157lm
4,000°k ±50k, CRI 80, 1250lm
 - LWD3 – 24W –
2,700°k ±50k, CRI 90, 1900lm
3,000°k ±50k, CRI 90, 2035lm
3,500°k ±50k, CRI 90, 2186lm
4,000°k ±50k, CRI 80, 2691lm
 - LWD5 – 38W –
2,700°k ±50k, CRI 90, 2815lm
3,000°k ±50k, CRI 90, 3012lm
3,500°k ±50k, CRI 90, 3012lm
4,000°k ±50k, CRI 80, 3700lm
- INC/ELV/0-10V Universal dimming. Lutron dimming options and EldoLED dimming options available. See order example on pg 13.
- Wall mount
- 30°, 50° and 80° optics included; optional optic: Very Narrow 10°
- UL/C-UL listed for wet location

Housing

- Machined aluminum housing

Finish

- See finishes on page 12.



LWD3-27-PNC-4



LWD2-40-GA-3



Fixture illuminates from top and bottom of cylinder



LF5-27-BB-1



LF2-27-PNC-3



LF3-40-WT-4

LED Flush Mount

Fixture

- Available in three sizes:
 - LF2 – 2¼" Ø x 8¾" h
 - LF3 – 3½" Ø x 10¾" h
 - LF5 – 5" Ø x 13½" h
- 120-277V LED:
 - LF2 – 14W –
 - 2,700°k ±50k, CRI 90, 980lm
 - 3,000°k ±50k, CRI 90, 1074lm
 - 3,500°k ±50k, CRI 90, 1157lm
 - 4,000°k ±50k, CRI 80, 1250lm
 - LF3 – 24W –
 - 2,700°k ±50k, CRI 90, 1900lm
 - 3,000°k ±50k, CRI 90, 2035lm
 - 3,500°k ±50k, CRI 90, 2186lm
 - 4,000°k ±50k, CRI 80, 2691lm
 - LF5 – 38W –
 - 2,700°k ±50k, CRI 90, 2815lm
 - 3,000°k ±50k, CRI 90, 3012lm
 - 3,500°k ±50k, CRI 90, 3012lm
 - 4,000°k ±50k, CRI 80, 3700lm
- INC/ELV/0-10V Universal dimming. Lutron dimming options and EldoLED dimming options available. See order example on pg 13.
- Flush mount
- 30°, 50° and 80° optics included; optional optic: Very Narrow 10°
- UL/C-UL listed for wet location

Housing

- Machined aluminum housing

Finish

- See finishes on page 12.



LED Flush Mount

Finishes

Standard and Specialty Finishes can be specified for all fixtures, unless otherwise noted.

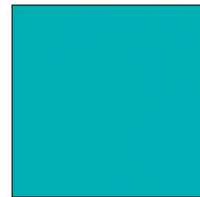
Standard Finishes



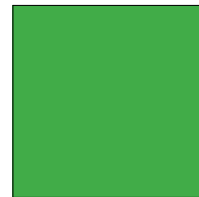
ABL Aegean Blue



BLU Blue



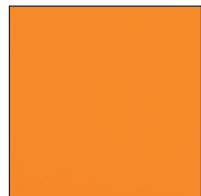
TTL Tahitian Teal



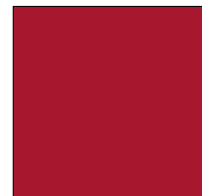
LG Lime Green



HG Hunter Green



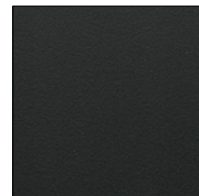
TNG Tangerine



RD Red



BK Gloss Black



MB Matte Black



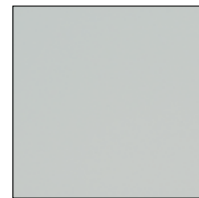
GWT Gloss White



WT Semi-Gloss White



DVG Dove Gray



FLG Flannel Gray



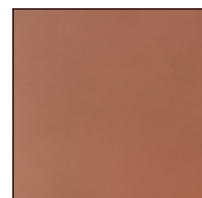
PNA Painted Natural Aluminum



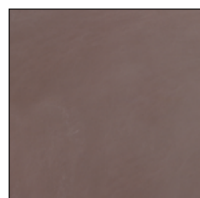
SS Satin Silver



TGP Textured Graphite



PNC Painted Natural Copper



BZP Bronze Patina



TBZ Textured Bronze



BB Burnished Bronze

Specialty Finish



GA Galvanized

Coastal Finish Option

The Coastal Finish is a coating which protects finishes on fixtures installed in coastal climates. To specify, add "-C" to end of order number.



Ordering Example

LP2 - 27 - MB - 3 - DIM
 LP3 - 30 - WT - 4 - DIM
 LP5 - 40 - BB - 1 - DIM

FIXTURE NUMBER

LIGHT COLOR

FINISH CODE

VERSION NUMBER

DIMMING OPTIONS

27 - 2700°K
 30 - 3000°K
 35 - 3500°K
 40 - 4000°K

See p. 12

BLANK - Standard Dimming
L1 - Lutron A Series Hi-Lume 2-Wire*
LR1 - Lutron A Series Hi-Lume 2-Wire Remote*
L2 - Lutron Eco-System 5 Series*
L3 - Lutron Hi-Lume H Series Fade-to-Black*
L1 - Lutron A Series Hi-Lume 3-Wire*
EL1 - EldoLED DALI*
EL2 - EldoLED 0-10V*

All CSL Cylinder Fixtures:

- are UL and C-UL approved for wet locations
- offer multiple dimming options
- are offered with Coastal Finish option, see page 12



Index

LF2	10	LW2	6
LF3	10	LW3	6
LF5	10	LW5	6
LP2	3	LWD2	9
LP3	3	LWD3	9
LP5	3	LWD5	9
LP2-ADJ	5		
LP3-ADJ	5		
LP5-ADJ	5		

* Lutron/EldoLED dimming options require a larger canopy or backplate. Contact your CSL rep or the factory for details



A Division of Troy-CSL Lighting, Inc.

14508 Nelson Avenue
City of Industry CA 91744
Tel: 626.336.4511
Fax: 626.330.4266

www.csllighting.com

